



PARK TOOL CO.
6 Long Lake Road
St. Paul, MN 55115
www.parktool.com

**PROFESSIONAL
RACE STAND
PRS-15**

ASSEMBLY AND SET UP

1. Press top tube (33) and clamp assembly onto extension upright (44) and tighten top tube cap screws (35).
2. Open front and rear legs (65, 57) and slide base upright (52) upward through yoke (53) until it bottoms on base upright stop screw (56).
3. Swing quick release lever (48) open and insert extension upright (44) into base upright (52). Set to desired working height (do not exceed "max" height line on extension) and swing quick release lever closed. If tension of quick release is not adequate to securely hold extension upright, swing quick release lever open, tighten nut (47), and swing quick release lever closed.
4. Thread yoke knob (61) into yoke (53) and tighten. Thread rear leg knobs (54) into yoke until they contact legs.
5. Loosen top tube handle (42) fully. Unfold clamp and tighten top tube handle, guiding clamp into channel of top tube assembly. The PRS-15 is ready for use.

OPERATION

The clamp of the PRS-15 can be rotated 360 degrees, allowing easy access to any component of the bike. To adjust the rotational angle of the clamp, loosen top tube handle, rotate clamp to the desired angle, and tighten top tube handle.

The clamp of the PRS-15 fits tubes to 3". **To clamp bike**, depress cam lever (30) and pull clamp knob (1) to open clamp jaws. Place frame tube or seatpost between jaws and push clamp knob to close jaws. Release cam lever and turn clamp knob to provide final tightening. **To release bike from clamp**, loosen clamp knob one turn to release clamping pressure. Then depress cam lever and pull clamp knob to open jaws.

FOLDING FOR STORAGE

1. Swing quick release lever (48) open, lower extension upright (44), and swing quick release lever closed.
2. Loosen top tube handle (42) fully. Draw clamp outward and fold down. Tighten top tube handle to lock clamp.
3. Loosen yoke knob (61) and slide yoke (53) up base upright (52). Allow legs to fold down. Tighten yoke knob.

UNFOLDING FOR USE

1. Loosen yoke knob (61). Open front and rear legs (65, 57) and slide base upright (52) upward through yoke (53) until it bottoms on base upright stop screw (56). Tighten yoke knob.
2. Tighten or loosen rear leg knobs (54) until base upright and all four legs are in contact with ground.
3. Loosen top tube handle (42) fully. Unfold clamp and tighten top tube handle, guiding clamp into channel of top tube assembly. Tighten top tube handle.
4. Swing quick release lever (48) open, raise extension upright (44) to desired working height, and swing quick release lever closed.

NOTES

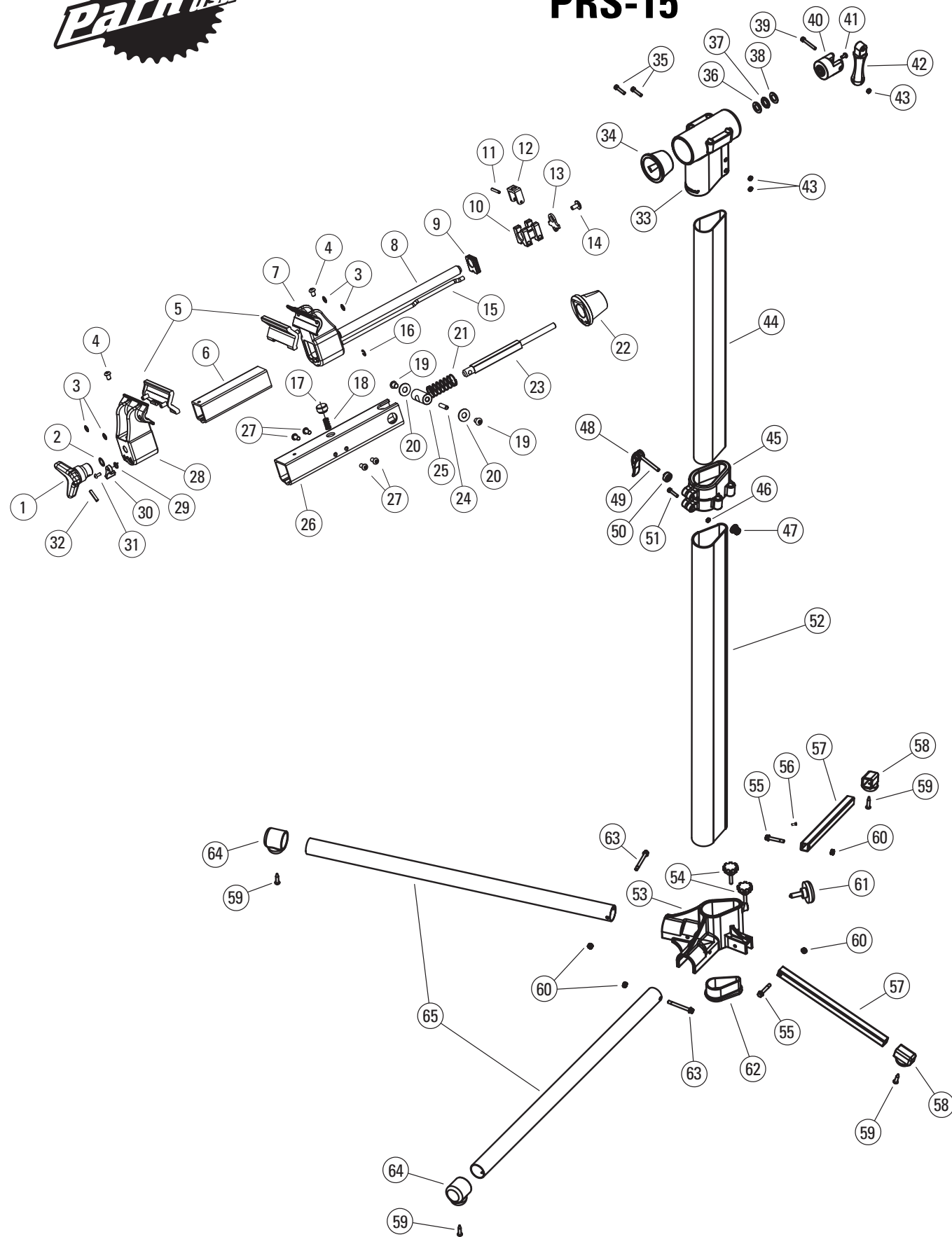
Always clean part of bike being clamped. Dirt or grit in clamping area may damage bike finish.

Use care when clamping thin walled tubing to prevent damage.

Periodically wipe outside of clamp and slider body (6) to remove accumulated dirt. Wipe slider body with a light lubricant and apply a drop of lubricant to the pivoting points of the clamp knob (1) and cam lever (30). Also, periodically clean and apply a small amount of grease to threads of yoke knob (61) and rear leg knobs (54).



PROFESSIONAL RACE STAND PRS-15



PARTS LIST FOR PRS-15 PROFESSIONAL RACE STAND

Ref. No.	Part No.	Description	Qty.
1	1266	Clamp Knob	1
2	1004-1	Clamp Knob Washer	1
3	467-1	Jaw Cover Clip	4
4	1257-2	Jaw Screw 1/4 - 20 x 3/8	2
5	1259-2	Jaw Cover	2
6	1260	Slider Body	1
7	1256	Fixed Jaw	1
8	1248	Lead Screw - 5/8 - 8 x 10-3/8	1
9	1253	Slider Plate	1
10	1250	Half Nut Support	1
11	1252	Half Nut Spring Pin 5/32 x 1	1
12	1251	Half Nut Slider	1
13	1247	Cam Plate	1
14	1267	Acme Rod Screw	1
15	1249	Half Nut Cam	1
16	1249E	E-Clip for Half Nut Cam	1
17	1254	Spring Cap	1
18	1255	Slider Spring	1
19	1244-2	Body Pivot Screw 5/16 - 24 x 3/8	2
20	1245-2	Body Pivot Washer	2
21	1240	Donut Spring	1
22	1239	Donut	1
23	1238	Clamp Screw	1
24	1243	Body Pivot Spring Pin 1/4 x 7/8	1
25	1242	Body Pivot	1
26	1241	Main Body	1
27	1539-8	Main Body/Acme Rod Screw 1/4 - 20 x 1/2	4
28	1261	Moveable Jaw	1
29	1262	Cam Lever Spring	1
30	1263	Cam Lever	1
31	1264	Cam Lever Screw M4 x .7 x 10mm	1
32	1265	Clamp Knob Spring Pin 3/16 x 7/8	1
33	1237	Composite Top Tube	1
34	149	Top Tube Sleeve	1
35	943-1	Top Tube Cap Screw 5mm x 22mm	2
36	749-2	Top Tube Thick Washer	1
37	748-1	Top Tube Needle Bearing	1
38	749-1	Top Tube Thin Washer	1
39	943-2	Top Tube Cap Screw 5mm x 30mm	1
40	1234	Top Tube Handle Boss	1
41	1235	Handle Boss Screw	1
42	117A-1	Top Tube Swing Handle	1
43	944	Top Tube Nut 5mm	3
44	1228	Extension Upright	1
45	1229	Main Sleeve	1
46	944	Main Sleeve Nut 5mm	1
47	1233	Quick Release Nut	1
48	1230	Quick Release Lever	1
49	1231	Quick Release Screw	1
50	1232	Quick Release Washer	1
51	943-2	Main Sleeve Cap Screw 5mm x 30mm	1
52	1227	Base Upright	1
53	1220	Yoke	1
54	1224-2	Rear Leg Knob	2
55	1223-2	Rear Leg Screw 1/4 - 20 x 1-1/2	2
56	1226	Base Upright Stop Screw	1
57	1222-2	Rear Leg	2
58	1226-2	Rear Leg Cap	2
59	1216-4	Leg Cap Screw	4
60	1218-4	Leg Nylok Nut 1/4 - 20	4
61	1225	Yoke Knob	1
62	1221	Upright Cap	1
63	1219-2	Front Leg Screw 1/4 - 20 x 2-3/8	2
64	1215-2	Front Leg Cap	2
65	1217-2	Front Leg	2