



# 1079R Revised Replacement Base Assembly for PFP-3 and PFP-6

Park Tool Co. [www.parktool.com](http://www.parktool.com)

## 1079R Revised Replacement Base Assembly for PFP-3 and PFP-6 Home Mechanic Floor Pumps

### Removal of old 1079 Base

- Unthread short gauge hose assembly (#1) from base (#2).
- Locate check-valve ball (#3) in base (under the short gauge hose assembly). **Remove and save check-valve ball.**
- Remove threaded ring (#4) from base.
- Remove retaining screw (#5) on side of base.
- Pull barrel (#6) from base.
- Slide seal (#7) and threaded ring from barrel.
- Inspect oblong-shaped screw slot in barrel for burrs and remove if necessary.
- Discard used base, seal, threaded ring, and retaining screw.

### Installation of 1079R Replacement Base Assembly

- Slide new threaded ring (#4) onto barrel (#6).
- Slide new seal (#7) onto barrel (wide end of seal should face the threaded ring).
- Insert barrel into new base (#2) and rotate barrel until oblong-shaped screw slot aligns with small screw hole in base. Install retaining screw (#5) and tighten until rubber is slightly compressed. Do not over tighten.
- Install ribbed elbow fitting with O-ring (#8) into large round hole in base, pushing until seated tightly.
- Install small screw (#9) into small hole underneath base to secure ribbed elbow fitting.
- Slide seal and threaded ring down barrel and thread onto base. Take care not to cross-thread. Do not over tighten.
- Drop check-valve ball (#3) into ribbed elbow fitting.
- Thread short gauge hose assembly (#1) onto ribbed elbow fitting.

© 2012 Park Tool Co.

® PARK TOOL and the color BLUE are registered trademarks of Park Tool Co.



# 1079R Revised Replacement Base Assembly for PFP-3 and PFP-6

Park Tool Co. [www.parktool.com](http://www.parktool.com)

## 1079R Revised Replacement Base Assembly for PFP-3 and PFP-6 Home Mechanic Floor Pumps

### Removal of old 1079 Base

- Unthread short gauge hose assembly (#1) from base (#2).
- Locate check-valve ball (#3) in base (under the short gauge hose assembly). **Remove and save check-valve ball.**
- Remove threaded ring (#4) from base.
- Remove retaining screw (#5) on side of base.
- Pull barrel (#6) from base.
- Slide seal (#7) and threaded ring from barrel.
- Inspect oblong-shaped screw slot in barrel for burrs and remove if necessary.
- Discard used base, seal, threaded ring, and retaining screw.

### Installation of 1079R Replacement Base Assembly

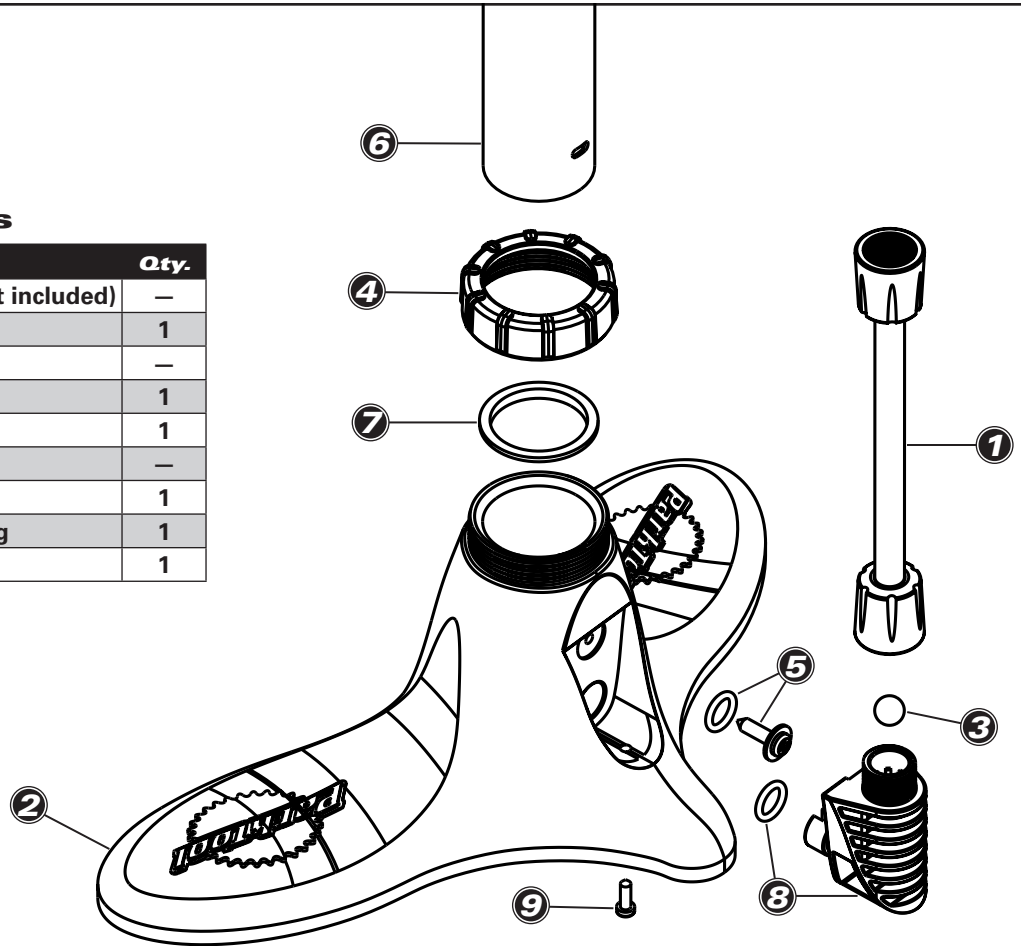
- Slide new threaded ring (#4) onto barrel (#6).
- Slide new seal (#7) onto barrel (wide end of seal should face the threaded ring).
- Insert barrel into new base (#2) and rotate barrel until oblong-shaped screw slot aligns with small screw hole in base. Install retaining screw (#5) and tighten until rubber is slightly compressed. Do not over tighten.
- Install ribbed elbow fitting with O-ring (#8) into large round hole in base, pushing until seated tightly.
- Install small screw (#9) into small hole underneath base to secure ribbed elbow fitting.
- Slide seal and threaded ring down barrel and thread onto base. Take care not to cross-thread. Do not over tighten.
- Drop check-valve ball (#3) into ribbed elbow fitting.
- Thread short gauge hose assembly (#1) onto ribbed elbow fitting.

© 2012 Park Tool Co.

® PARK TOOL and the color BLUE are registered trademarks of Park Tool Co.

### 1079R part numbers

Description	Qty.
① Short Gauge Hose Assembly (not included)	—
② Base	1
③ Check Valve Ball (not included)	—
④ Threaded Ring	1
⑤ Retaining Screw	1
⑥ Barrel (not included)	—
⑦ Seal	1
⑧ Ribbed Elbow Fitting with O-Ring	1
⑨ Small Screw	1



### 1079R part numbers

Description	Qty.
① Short Gauge Hose Assembly (not included)	—
② Base	1
③ Check Valve Ball (not included)	—
④ Threaded Ring	1
⑤ Retaining Screw	1
⑥ Barrel (not included)	—
⑦ Seal	1
⑧ Ribbed Elbow Fitting with O-Ring	1
⑨ Small Screw	1

