



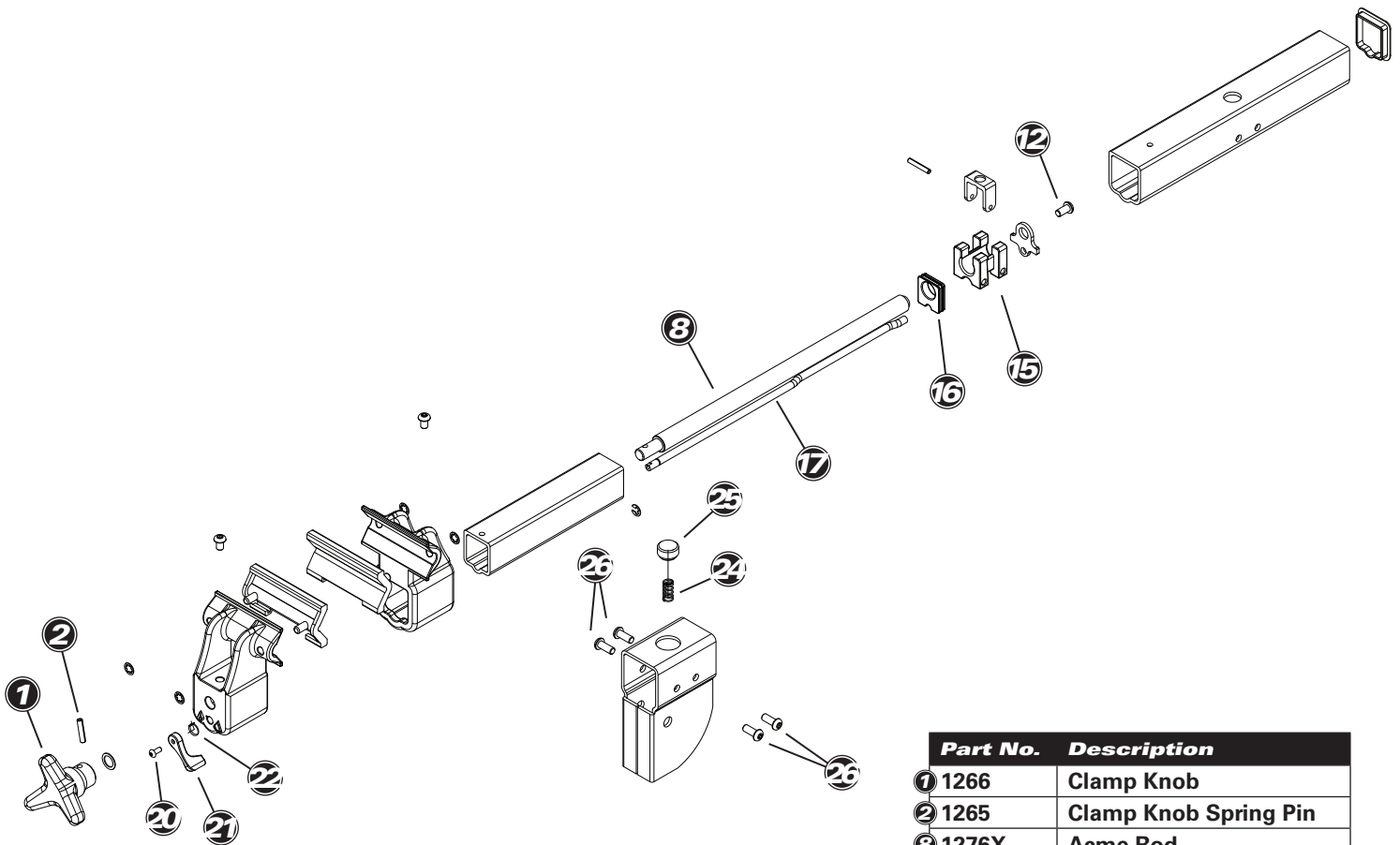
# 100-4XRK Extreme Range Clamp Conversion Kit for 100-4X or 100-6X

Park Tool Co. [www.parktool.com](http://www.parktool.com)

## Step 1

### Disassembly Instructions for 100-4X or 100-6X Clamp

1. Remove cap (#25) and spring (#24).
2. Remove 4 main body screws (#26).
3. Pull sliding jaw assembly out of clamp.
4. Remove acme rod screw (#12).
5. Slide half nut support (#15) off acme rod (#8).
6. Remove knob spring pin (#2) and knob (#1) from acme rod (#8).
7. Remove acme rod (#8).
8. Remove cam lever screw (#20), cam lever (#21), cam lever spring (#22) and half nut cam (#17).
9. Replace spring cap (#25).
10. Remove slider plate (#16) from inside of sliding jaw tube.



Part No.	Description
① 1266	Clamp Knob
② 1265	Clamp Knob Spring Pin
⑧ 1276X	Acme Rod
⑫ 1267	Acme Rod Screw
⑮ 1250	Half Nut Support
⑯ 1253	Slider Plate
⑰ 1277X	Half Nut Cam
⑳ 1264	Cam Lever Screw
㉑ 1263	Cam Lever
㉒ 1262	Cam Lever Spring
㉔ 1255	Slider Spring
㉕ 1254	Spring Cap
㉖ 1279X-4	Main Body Screw



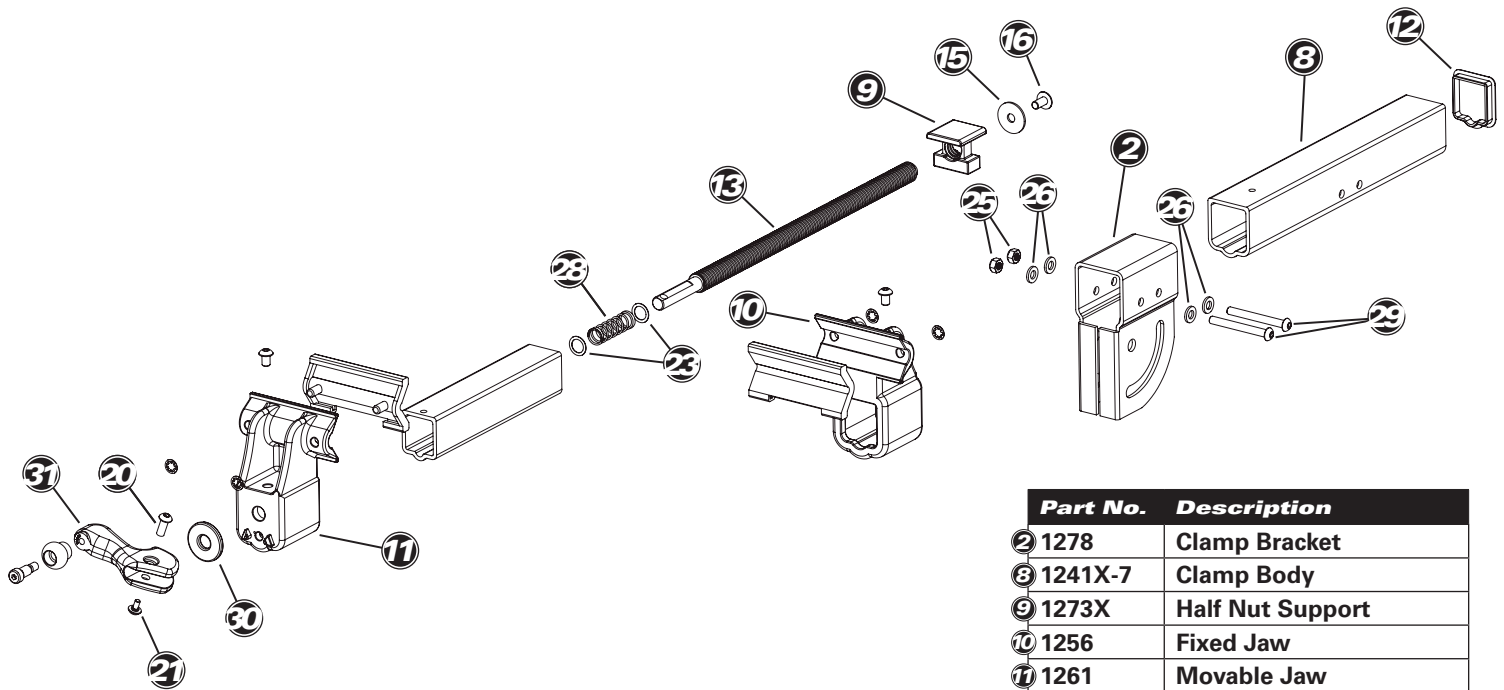
# 100-4XRK Extreme Range Clamp Conversion Kit for 100-4X or 100-6X

Park Tool Co. www.parktool.com

## Step 2

### Reassembly Instructions – Conversion to 100-7X Clamp

1. Grease acme rod (#13).
2. Thread on half nut support 1 inch (#9).
3. Apply thread lock compound on rod screw (#16) and washer (#15) and install on end of acme rod (#13).
4. Place washer (#23), spring (#28), and washer (#23) on handle end of acme rod (#13).
5. Slide acme rod with washers and spring into sliding jaw. Compress spring so end of rod sticks through blue jaw.
6. Place nylon washer (#30) on acme rod end.
7. Place clamp handle (#31) on acme rod over nylon washer (#30).
8. Compress spring (#28) and secure handle with handle screw (#20) and screw cap (#21). Tighten with two 4mm hexes.
9. Install screw (#29) and washer (#26) through rear hole of clamp bracket (#2). Place washer (#26) and nylon nut (#25) on screw (#29).
10. Rotate half nut support (#9) thin side up (as pictured).
11. Slide movable jaw (#11) through fixed jaw (#10) into clamp body (#8). Half nut support (#9) will stop at screw (#29) already installed.
12. Install second screw (#29) and washer (#26) in front hole of clamp bracket (#2). Place washer (#26) and nylon nut (#25) on screw (#29) and tighten both screws (#29).
13. Tighten nut (#25), washer (#26), screw (#29) in clamp bracket (#2) (10mm).
14. Install end cap (#12).



Part No.	Description
2	1278 Clamp Bracket
8	1241X-7 Clamp Body
9	1273X Half Nut Support
10	1256 Fixed Jaw
11	1261 Movable Jaw
12	1275X Main Body Cap
13	1276 Acme Rod
15	1556-4 Washer
16	1267 Acme Rod Screw
20	1964 Handle Screw
21	1965 Handle Screw Cap
23	1004-1 Handle Washer
25	1883-4 Nylon Lock Nut
26	1926-4 Washer
28	1271X Compression Spring
29	1272X-2 Screw
30	1809X Nylon Washer
31	1966-7X Clamp Handle